

A stylized graphic of a camera lens, showing concentric circles and a central target symbol. The lens is depicted in a semi-circular cross-section, with a central white target symbol consisting of a central dot and two concentric circles. The lens elements are rendered in shades of gray and red, with a vertical white line passing through the center. The overall design is modern and technical.

HIKVISION

Blazer Express Station

Quick Start Guide

UD01383B

Quick Start Guide

COPYRIGHT ©2016 Hangzhou Hikvision Digital Technology Co., Ltd.

ALL RIGHTS RESERVED.

Any and all information, including, among others, wordings, pictures, graphs are the properties of Hangzhou Hikvision Digital Technology Co., Ltd. or its subsidiaries (hereinafter referred to be “Hikvision”). This user manual (hereinafter referred to be “the Manual”) cannot be reproduced, changed, translated, or distributed, partially or wholly, by any means, without the prior written permission of Hikvision. Unless otherwise stipulated, Hikvision does not make any warranties, guarantees or representations, express or implied, regarding to the Manual.

About this Manual

This Manual is applicable to Blazer Express Station.

The Manual includes instructions for using and managing the product. Pictures, charts, images and all other information hereinafter are for description and explanation only. The information contained in the Manual is subject to change, without notice, due to firmware updates or other reasons. Please find the latest version in the company website (<http://overseas.hikvision.com/en/>).

Please use this user manual under the guidance of professionals.

Trademarks Acknowledgement

HIKVISION and other Hikvision’s trademarks and logos are the properties of Hikvision in various jurisdictions. Other trademarks and logos mentioned below are the properties of their respective owners.

Legal Disclaimer

TO THE MAXIMUM EXTENT PERMITTED BY APPLICABLE LAW, THE PRODUCT DESCRIBED, WITH ITS HARDWARE, SOFTWARE AND FIRMWARE, IS PROVIDED “AS IS”, WITH ALL FAULTS AND ERRORS, AND HIKVISION MAKES NO WARRANTIES, EXPRESS OR IMPLIED, INCLUDING WITHOUT LIMITATION, MERCHANTABILITY, SATISFACTORY QUALITY, FITNESS FOR A PARTICULAR PURPOSE, AND NON-INFRINGEMENT OF THIRD PARTY. IN NO EVENT WILL HIKVISION, ITS DIRECTORS, OFFICERS, EMPLOYEES, OR AGENTS BE LIABLE TO YOU FOR ANY SPECIAL, CONSEQUENTIAL, INCIDENTAL, OR INDIRECT DAMAGES, INCLUDING, AMONG OTHERS, DAMAGES FOR LOSS OF BUSINESS PROFITS, BUSINESS INTERRUPTION, OR LOSS OF DATA OR

DOCUMENTATION, IN CONNECTION WITH THE USE OF THIS PRODUCT, EVEN IF HIKVISION HAS BEEN ADVISED OF THE POSSIBILITY OF SUCH DAMAGES.

REGARDING TO THE PRODUCT WITH INTERNET ACCESS, THE USE OF PRODUCT SHALL BE WHOLLY AT YOUR OWN RISKS. HIKVISION SHALL NOT TAKE ANY RESPONSIBILITIES FOR ABNORMAL OPERATION, PRIVACY LEAKAGE OR OTHER DAMAGES RESULTING FROM CYBER ATTACK, HACKER ATTACK, VIRUS INSPECTION, OR OTHER INTERNET SECURITY RISKS; HOWEVER, HIKVISION WILL PROVIDE TIMELY TECHNICAL SUPPORT IF REQUIRED.

SURVEILLANCE LAWS VARY BY JURISDICTION. PLEASE CHECK ALL RELEVANT LAWS IN YOUR JURISDICTION BEFORE USING THIS PRODUCT IN ORDER TO ENSURE THAT YOUR USE CONFORMS THE APPLICABLE LAW. HIKVISION SHALL NOT BE LIABLE IN THE EVENT THAT THIS PRODUCT IS USED WITH ILLEGITIMATE PURPOSES.

IN THE EVENT OF ANY CONFLICTS BETWEEN THIS MANUAL AND THE APPLICABLE LAW, THE LATER PREVAILS.

Regulatory Information

FCC Information

Please take attention that changes or modification not expressly approved by the party responsible for compliance could void the user's authority to operate the equipment.

FCC compliance: This equipment has been tested and found to comply with the limits for a Class B digital device, pursuant to part 15 of the FCC Rules. These limits are designed to provide reasonable protection against harmful interference in a residential installation. This equipment generates, uses and can radiate radio frequency energy and, if not installed and used in accordance with the instructions, may cause harmful interference to radio communications. However, there is no guarantee that interference will not occur in a particular installation. If this equipment does cause harmful interference to radio or television reception, which can be determined by turning the equipment off and on, the user is encouraged to try to correct the interference by one or more of the following measures:

- Reorient or relocate the receiving antenna.
- Increase the separation between the equipment and receiver.
- Connect the equipment into an outlet on a circuit different from that to which the receiver is connected.
- Consult the dealer or an experienced radio/TV technician for help.

FCC Conditions

This device complies with part 15 of the FCC Rules. Operation is subject to the following two conditions:

1. This device may not cause harmful interference.
2. This device must accept any interference received, including interference that may cause undesired operation.

EU Conformity Statement



This product and - if applicable - the supplied accessories too are marked with "CE" and comply therefore with the applicable harmonized European standards listed under the EMC Directive 2014/30/EU, the LVD Directive 2014/35/EU, the RoHS Directive 2011/65/EU.



2012/19/EU (WEEE directive): Products marked with this symbol cannot be disposed of as unsorted municipal waste in the European Union. For proper recycling, return this product to your local supplier upon the purchase of equivalent new equipment, or dispose of it at designated collection points. For more information see: www.recyclethis.info



2006/66/EC (battery directive): This product contains a battery that cannot be disposed of as unsorted municipal waste in the European Union. See the product documentation for specific battery information. The battery is marked with this symbol, which may include lettering to indicate cadmium (Cd), lead (Pb), or mercury (Hg). For proper recycling, return the battery to your supplier or to a designated collection point. For more information see: www.recyclethis.info

Industry Canada ICES-003 Compliance

This device meets the CAN ICES-3 (B)/NMB-3(B) standards requirements.



Safety Instruction

These instructions are intended to ensure that user can use the product correctly to avoid danger or property loss.

The precaution measure is divided into “Warnings” and “Cautions”

Warnings: Serious injury or death may occur if any of the warnings are neglected.

Cautions: Injury or equipment damage may occur if any of the cautions are neglected.

	
Warnings Follow these safeguards to prevent serious injury or death.	Cautions Follow these precautions to prevent potential injury or material damage.



Warnings

- Proper configuration of all passwords and other security settings is the responsibility of the installer and/or end-user.
- In the use of the product, you must be in strict compliance with the electrical safety regulations of the nation and region. Please refer to technical specifications for detailed information.
- Input voltage should meet both the SELV (Safety Extra Low Voltage) and the Limited Power Source with 100~240 VAC, 48 VDC or 12 VDC according to the IEC60950-1 standard. Please refer to technical specifications for detailed information.
- Do not connect several devices to one power adapter as adapter overload may cause over-heating or a fire hazard.
- Please make sure that the plug is firmly connected to the power socket.
- If smoke, odor or noise rise from the device, turn off the power at once and unplug the power cable, and then please contact the service center.

Preventive and Cautionary Tips

Before connecting and operating your device, please be advised of the following tips:

- Ensure unit is installed in a well-ventilated, dust-free environment.
- Unit is designed for indoor use only.
- Keep all liquids away from the device.
- Ensure environmental conditions meet factory specifications.
- Ensure unit is properly secured to a rack or shelf. Major shocks or jolts to the unit as a result of dropping it may cause damage to the sensitive electronics within the unit.
- Use the device in conjunction with an UPS if possible.
- Power down the unit before connecting and disconnecting accessories and peripherals.
- A factory recommended HDD should be used for this device.
- Improper use or replacement of the battery may result in hazard of explosion. Replace with the same or equivalent type only. Dispose of used batteries according to the instructions provided by the battery manufacturer.

Symbol Conventions

The symbols that may be found in this document are defined as follows.


Symbol	Description
	Indicates a potentially hazardous situation, which if not avoided, could result in equipment damage, data loss, performance degradation, or unexpected results.

TABLE OF CONTENTS

Overview	7
Blazer Express Pre-Installation	7
Blazer Express Installation.....	7
Front Panel	8
Rear Panel	9
HDD Storage Calculation Chart	10
Basic Hardware Connection and Startup	11
Network Connection	11
Output Connection	11
Hard Disk Installation	11
Peripheral Connections	12
Wiring of Alarm Input.....	12
Wiring of Alarm Output	12
Using of Alarm Connectors.....	13
Power Connection and Startup.....	13
Network Parameters Settings.....	13
Managing Installed Hard Disks	14
Accessing Blazer Express via Web Client.....	15
Quick Start	17
Resource Management and Live View.....	17
Adding the Online Network Camera	17
Adding the Network Camera by IP Address.....	18
Adding the Camera via PoE Interface	19
Local Storage	19
Live View	20
Recording Schedule Settings and Playback	21
Recording Settings	21
Remote Playback.....	21
Searching Video Files for Playback	21
Playing Video Files	21
Event Configuration.....	22
Configuring Motion Detection Event.....	22
Checking Event Logs	22
Shutting Down the Blazer Express	22

Overview

Blazer Express is an intelligent video management software station that comes preinstalled with an operating system and outstanding iVMS, and can support up to 16 or 32 network cameras. With flexible features and included storage space (optional), Blazer Express offers you an efficient and easy one-stop solution for video surveillance implementation, for applications from a small retail store to a complex surveillance installation with multiple sites.

Note: The Blazer Express station is dedicated to video surveillance, and we strongly recommend that you do not install any other software or program on the station to insure its performance and reliability.

Blazer Express Pre-Installation

The Blazer Express is highly advanced surveillance equipment that should be installed with care. Please take into consideration the following precautionary steps before installation of the Blazer Express.

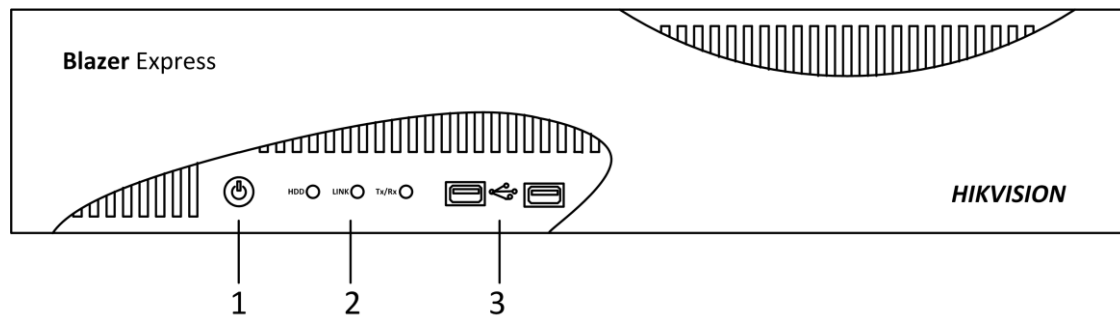
1. Keep all liquids away from the Blazer Express.
2. Install the Blazer Express in a well-ventilated and dust-free area.
3. Ensure environmental conditions meet factory specifications.
4. Install a manufacturer recommended HDD.

Blazer Express Installation

During the installation of the Blazer Express:

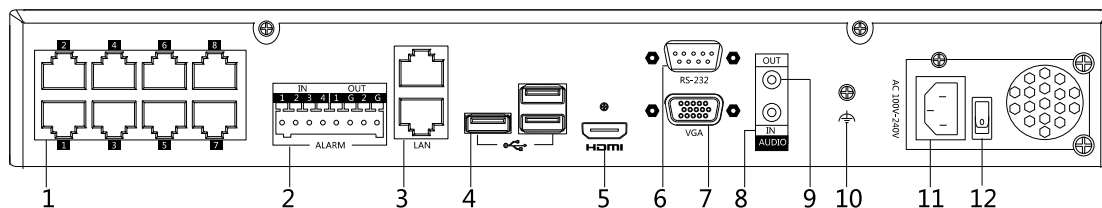
1. Use brackets for rack mounting.
2. Ensure there is ample room for audio and video cables.
3. When routing cables, ensure that the bend radius of the cables are no less than five times than its diameter.
4. Connect both the alarm and RS-485 cable.
5. Allow at least 2cm (≈ 0.75 -inch) of space between racks mounted devices.
6. Ensure the Blazer Express is grounded.
7. Environmental temperature should be within the range of 0 °C to +45 °C, 32 °F to 113 °F.
8. Environmental humidity should be within the range of 10% ~ 90%.

Front Panel



No.	Name	Function Description	
1	POWER	Power on/off switch.	
2	Master Board Indicator	HDD	Normally blue when the master board works properly.
		Link	Normally blue when the CMS (Central Management Server) of the video management system running properly.
		Tx/Rx	
3	USB Interfaces	Universal Serial Bus (USB) ports for additional devices such as USB mouse and USB Hard Disk Drive (HDD).	

Rear Panel



Notes:

- PoE interface is only available for Blazer Express/16/8P.
- 12 VDC power input is available for Blazer Express/16. 100 to 240 VAC power input is available for Blazer Express/16/8P and Blazer Express/32.
- Power switch is only available for Blazer Express/16/8P and Blazer Express/32.

No.	Item	Description
1	PoE Interface	Network interfaces for the cameras and to provide power over Ethernet. <i>Note:</i> PoE interface is only available for Blazer Express/16/8P.
2	ALARM IN	Connector for alarm input.
	ALARM OUT	Connector for alarm output.
3	LAN Interface	LAN network interfaces.
4	USB Interface	Universal Serial Bus (USB) ports for additional devices such as USB mouse and USB Hard Disk Drive (HDD).
5	HDMI™	HDMI™ video output connector. The HDMI™ interfaces can also be used for video wall display.
6	RS-232 Interface	Connector for RS-232 devices.
7	VGA	Connector for VGA output. Display local video output and menu.
8	AUDIO IN	RCA connector for audio input.
9	AUDIO OUT	RCA connector for audio output.
10	GND	Ground
11	Power Supply	100 ~ 240 VAC or 12VDC power supply.
12	Power Switch	Power on/off switch.

HDD Storage Calculation Chart

The following chart shows an estimation of storage space used based on recording at one camera for an hour at a fixed bit rate.

Bit Rate	Storage Used
96 K	42 MB
128K	56 MB
160K	70 MB
192K	84 MB
224K	98 MB
256K	112 MB
320K	140 MB
384K	168 MB
448K	196 MB
512K	225 MB
640K	281 MB
768K	337 MB
896K	393 MB
1024K	450 MB
1280K	562 MB
1536K	675 MB
1792K	787 MB
2048K	900 MB
4096K	1800 MB
8192K	3600 MB
16384K	7.2 GB

Note:

Please note that supplied values for storage space used is just for reference. The storage values in the chart are estimated by formulas and may have some deviation from actual value.

Basic Hardware Connection and Startup

Before you can access the station via network, you need to properly power on the station and connect it to network.

Network Connection

Note: Consult your network administrator before installing the station to avoid possible network conflicts.

Use the network port on the rear panel and a network cable with RJ-45 connectors to connect the station to your system network.

Output Connection

Connect a VGA cable or HDMI™ cable to the video out interface (VGA or HDMI™) on the station.

Connect the VGA cable or HDMI™ cable to the display unit.

Hard Disk Installation

Before you start:

Disconnect the power from the Blazer Express before installing a hard disk drive (HDD). A factory recommended HDD should be used for this installation.

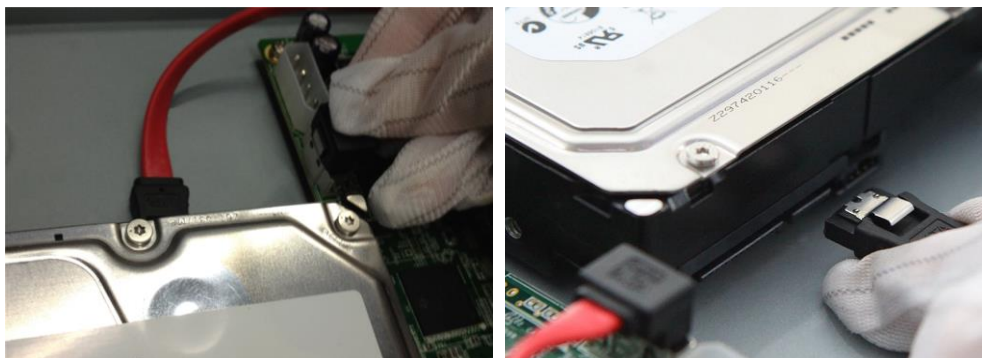
Tools Required: Screwdriver.

Steps:

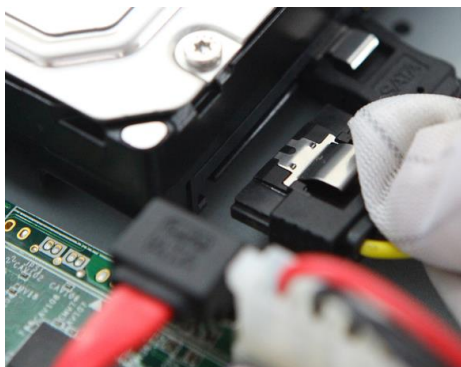
1. Remove the cover from the Blazer Express by unfastening the screws on the back and side.



2. Install the HDD using the provided screws and fasten the screws on the bottom to fix the HDD.
3. Connect the HDD to the motherboard of the Blazer Express with the included data cable.



4. Connect the power cable to the HDD.



- Repeat the above steps to install other hard disks onto the Blazer Express. After having finished the installation of all hard disks, re-install the cover and fasten screws.

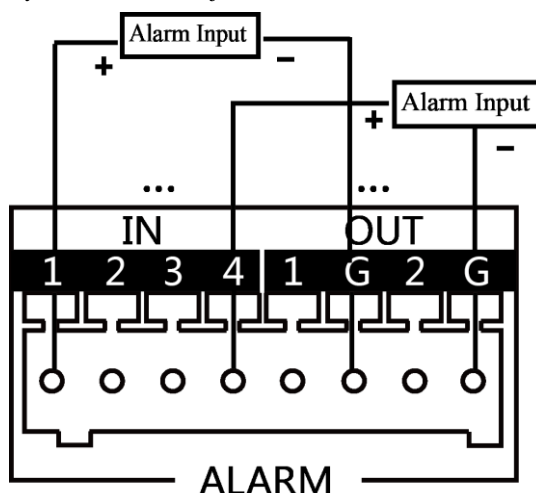
Peripheral Connections

Wiring of Alarm Input

The alarm input is an open/closed relay. To connect the alarm input to the device, use the following diagram.

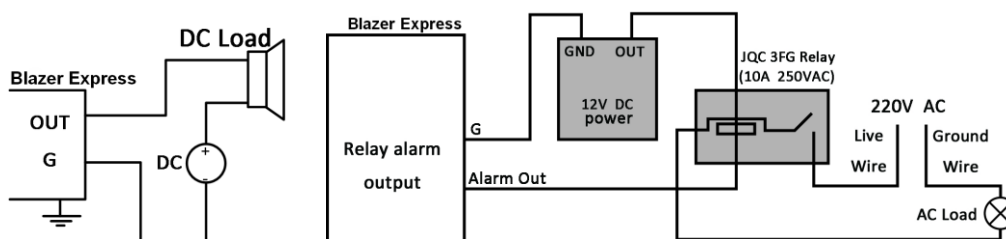
Notes:

- If the alarm input is not an open/close relay, please connect an external relay between the alarm input and the device.
- The following figures only for reference, subject to the actual device.



Wiring of Alarm Output

To connect to an alarm output (AC or DC load), use the following diagram:



DC Load Connection Diagram

AC Load Connection Diagram

For DC load, the jumpers can be used within the limit of 12V/1A safely.

To connect an AC load, jumpers should be left open (you must remove the jumper on the motherboard in the Blazer Express). Use an external relay for safety (as shown in the figure above).

There are 2 jumpers (JP1, and JP2) on the motherboard, each corresponding with one alarm output. By default, jumpers are connected. To connect an AC load, jumpers should be removed.

Example:

If you connect an AC load to the alarm output 2 of the Blazer Express, then you must remove the JP2.

Using of Alarm Connectors

To connect alarm devices to the Blazer Express:

1. Disconnect *pluggable block* from the ALARM IN /ALARM OUT terminal block.
2. Unfasten stop screws from the *pluggable block*, insert signal cables into slots and fasten stop screws. Ensure signal cables are in tight.
3. Connect *pluggable block* back into terminal block.

Power Connection and Startup

Plug the power supply (refer to the *Specifications*) into an electrical outlet. It is HIGHLY recommended that an Uninterruptible Power Supply (UPS) be used in conjunction with the device.

Turn on the power switch on the rear panel and power button on the front panel turns blue indicating that the unit begins to start up. Next time you want to turn on the Blazer Express again after shutdown with the power switch as on, you can just press the power button on the front panel.

After startup, the Power indicator LED remains blue.

For the first-time access to the station, you need to connect a display unit to Blazer Express via VGA or HDMI™ interface. In this manual, we only introduce the basic settings for Blazer Express. For detailed configuration, please refer to the *User Manual of Blazer Express Web Client*.

Network Parameters Settings

You need to properly set the network parameters before you can access to the station via network.

Before you start:

Blazer Express should be properly connected to the network and the video output should be connected to a display unit.

You also have to connect a USB mouse and USB keyboard via the available USB interface before you can properly configure the system.

Steps:

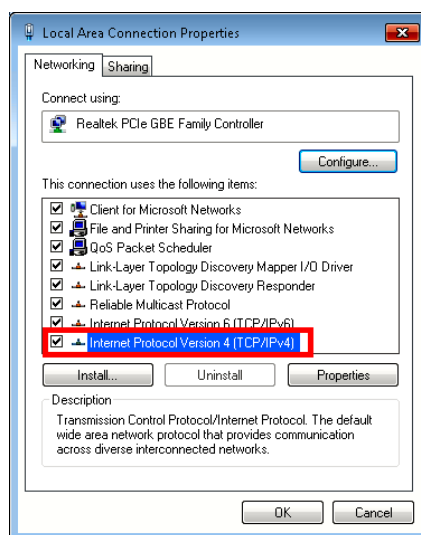
1. Log in to the Blazer Express.

Note: The default user name and password of Blazer Express's operating system are *admin* and *Abc12345*.



- You must change this default password to better protect against security risks, such as the unauthorized access by others to the product that may prevent the product from functioning properly and/or lead to other undesirable consequences. For changing the password, please refer to the help file of the operating system for detailed configuration.
- For your privacy, we strongly recommend changing the password to something of your own choosing (using a minimum of 8 characters, including upper case letters, lower case letters, numbers, and special characters) in order to increase the security of your product.
- Proper configuration of all passwords and other security settings is the responsibility of the installer and/or end-user.

2. In the pop-up User Account Control dialog, click **Yes** to allow the Service Manager to run.
3. Enter the Control Panel of the operating system. For how to access the control panel, refer to the help file of the operating system.
 - If using Category view, find the Programs category, and click **View network status and tasks**.
 - If using Small icons or Large icons view, select **Network and Sharing Center**.
4. Click the Ethernet with internet connection and click **Properties** in the pop-up window.
5. In the **This connection uses the following items:** field, double-click **Internet Protocol Version 4 (TCP/IPv4)**.



6. In the pop-up window, set the network parameters.

Obtain an IP address (DNS server address) automatically: You can get IP settings assigned automatically if your network supports this capability.

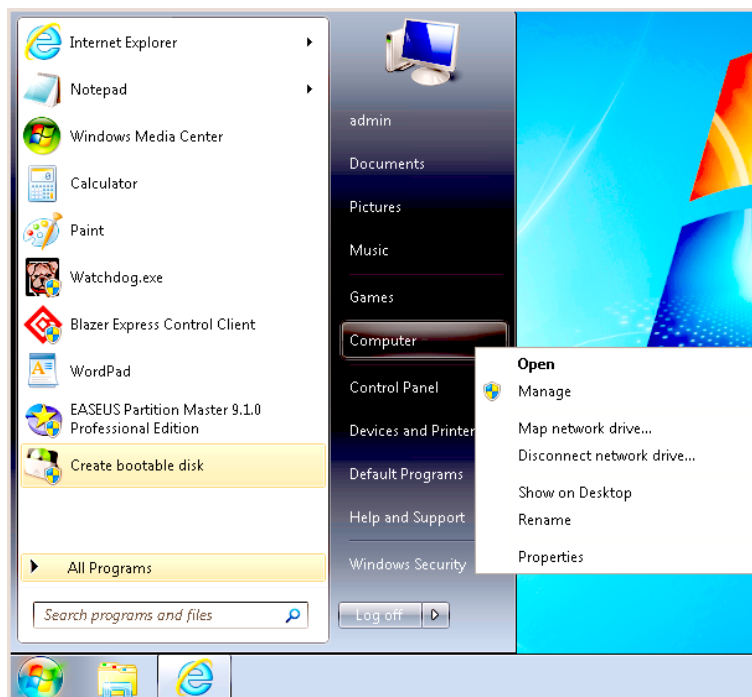
Use the following IP address (DNS server address): Please ask your network administrator for the appropriate IP settings.
7. Click **OK** to save the settings.

Managing Installed Hard Disks

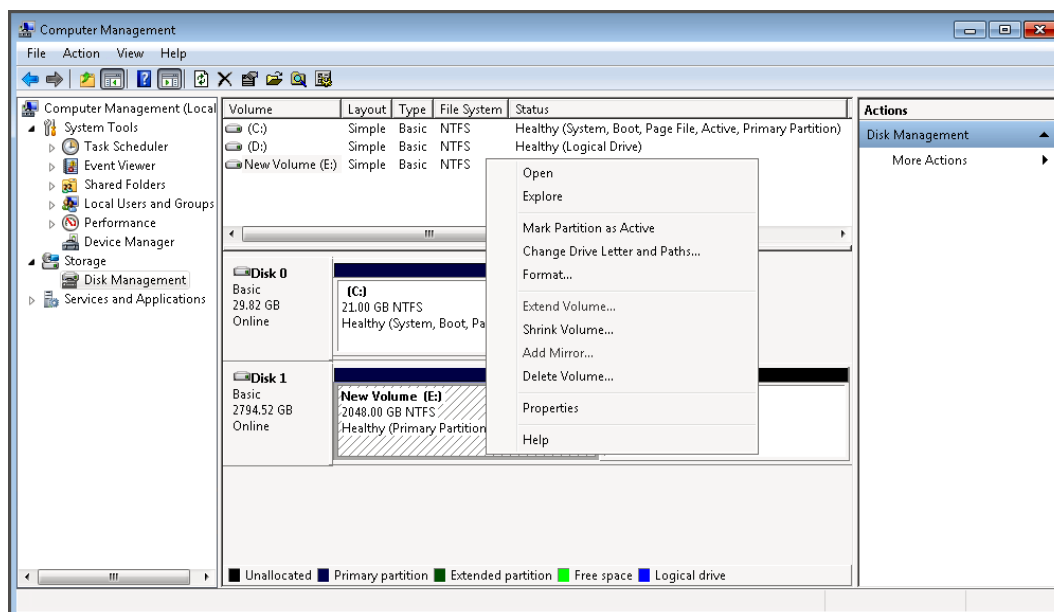
If the installed hard disks cannot work properly, you must manage the disks before you can use the disk for storage.

Steps:

1. Enter the Computer Management. For how to open the Computer Management, refer to the help file of the operating system.



2. In the left pane, click **Disk Management** under **Storage**.
3. Check the status of the disk. If the newly installed disk status is Healthy, perform the following steps to make it work properly.



4. Right-click the disk and select **Mark Partition as Active** in the right-click menu to mark the disk as active.
5. Right-click the disk and select **Format** in the right-click menu to format the disk.
6. Right-click the disk and select **Delete Volume** in the right-click menu.
7. Click **OK** in the pop-up dialog confirm deleting the disk.


Accessing Blazer Express via Web Client

You can access the Blazer Express via Web Client which is a B/S client for management of Blazer Express.

Note: If you have properly set the network parameters, you can access the Blazer Express via network. You can also access the system it locally. Here we only introduce the access to the system locally. For more details, refer to

the *User Manual of Blazer Express Web Client*.

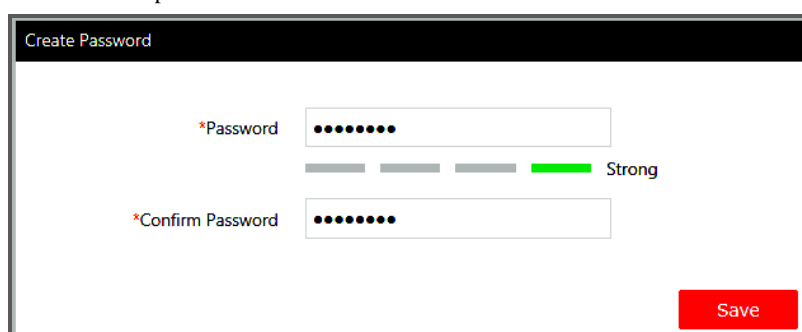
Steps:

1. In the address bar of the web browser, input the address of the Blazer Express and press the **Enter** key. A login window will pop up. For locally accessing the station, you can also double-click  on the desktop to pop up the login window.

Note: The address is in the format of `http://Blazer Express IP address`. If you access the system locally, the IP address is 127.0.0.1 or localhost.

Example: If the IP address of Blazer Express is 172.6.21.96, and you should enter ***http://172.6.21.96*** in the address bar.

2. Input the user name and password of Blazer Express and click **Login**.
3. In the pop-up window, input the customized password in the New Password and Confirm Password field, and click **Save** to set the password.




- *The password strength can be checked by the system. For your privacy, you must set the password to something of your own choosing (using a minimum of 8 characters, including upper case letters, lower case letters, numbers, and special characters) in order to increase the security of your product.*
 - *Proper configuration of all passwords and other security settings is the responsibility of the installer and/or end-user.*
4. If you access Blazer Express via Web Client over the network, you should install the plug-in before you can access the functions for the first time to login.
 - I. Click **Download Plug-in**, save the plug-in file and then close the web browser.
 - II. Install the plug-in according to the prompt.
 - III. After the installation, re-open the web browser and log into the Blazer Express (step 1). Please allow to run the plug-in in the pop-up prompt.
 5. Input the user name and new password, and click **Login**.

Notes:

- If failed login attempt is detected, you are required to input the verification code before you can login successfully.
- The account will be frozen for 10 minutes after 5 failed login attempts.
- If you have updated your Blazer Express, you may need to clear the cache of your web browser to display the Web Client page properly. Consult your IT system administrator if you do not know how to clear the cache.



Quick Start

Here we introduce the configuration for some basic functions of the Blazer Express via Web Client and Control Client.

Resource Management and Live View

Purpose:

Before you can live view, play back via the Control Client or set recording schedule, event configuration via Web Client, you need to add network cameras to the system and manage them by areas.

Log in to the Blazer Express via Web Client, and click **Physical View** to open the resource management page and the following two function pages are available.

- **Encoding Device:** Add, edit and delete the network cameras.
- **Local Storage:** Manage the connected HDDs of Blazer Express and allocate the storage space to the added cameras.

Here we introduce the configuration of adding the active online network cameras in the same local subnet with the Web Client and adding network cameras by specifying the IP address. For other methods to add the network cameras, refer to the *User Manual of Blazer Express Web Client*.

Adding the Online Network Camera

Before you start:

You must properly configure the network settings for the Blazer Express.

Steps:

1. Click the **Physical View**.
2. Click **Encoding Device** and check the checkbox of the camera(s) to add from the Online Device panel.
Note: For the inactive camera, you need to create the password for it before you can add it properly. For detailed steps, refer to *User Manual of Blazer Express Web Client (Resource Management>Adding the Network Cameras>Creating the Password)*.
3. Click **Add to Device List** to open the camera adding dialog.
4. Input the required information.

For adding one device:

- **Device Address:** Input the IP address of the device. The IP address of the device is obtained automatically in this adding mode.
- **Device Port:** Input the device port No.. The default value is 8000.
- **Alias:** Edit a name for the device as desired.
- **User Name:** Input the user name of the device.
- **Password:** Input the password of the device.
Note: The password strength of the device can be checked by the system. For your privacy, we strongly recommend changing the password to something of your own choosing (using a minimum of 8 characters, including upper case letters, lower case letters, numbers, and special characters) in order to increase the security of your product.
- If the added device is an automatic number plate recognition (ANPR) camera, you can check **Added as Automatic Number Plate Recognition Unit** checkbox.
Note: Up to two cameras can be added as ANPR unit for viewing the license plate and vehicle information recognized by the camera via Control Client (for details, refer to *User Manual of Blazer Express Control Client*).
- Set the **Export to Area** switch as ON to export the camera to an area. You can create a new area by the device name or select an existing area.
Note: If you do not export cameras to area, you cannot perform the live view, playback, event settings, etc.

For adding multiple devices:

- **User Name:** Input the user name of the device.
- **Password:** Input the password of the device.
Note: The password strength of the devices can be checked by the system. For your privacy, we strongly recommend changing the password to something of your own choosing (using a minimum of 8 characters, including upper case letters, lower case letters, numbers, and special characters) in order to increase the security of your product.
- If the added device is an automatic number plate recognition (ANPR) camera, you can check **Added as Automatic Number Plate Recognition Unit** checkbox.
Note: Up to two cameras can be added as ANPR unit for viewing the license plate and vehicle information recognized by the camera via Control Client (for details, refer to *User Manual of Blazer Express Control Client*).
- Set the **Export to Area** switch as ON to export the camera to an area. You can create a new area by the device name or select an existing area.
Note: If you do not export cameras to area, you cannot perform the live view, playback, event settings, etc.
Click **OK** to confirm adding the cameras.

Adding the Network Camera by IP Address

Steps:

1. Click the **Physical View**.
2. Click **Encoding Device** and click **Add** to enter the adding device page.
3. Select **IP Address** as the adding mode.
4. Input the required information.
 - **Manufacturer:** Select the manufacturer of the device.

- **Device Address:** Input the IP address of the device.
- **Device Port:** Input the port No. of the device. By default, it's 8000.
- **Alias:** Edit a name for the device as desired.
- **User Name:** Input the user name of the device.
- **Password:** Input the password of the device.

Note: The password strength of the device can be checked by the system. For your privacy, we strongly recommend changing the password to something of your own choosing (using a minimum of 8 characters, including upper case letters, lower case letters, numbers, and special characters) in order to increase the security of your product.

5. If the added device is an automatic number plate recognition (ANPR) camera, you can check **Added as Automatic Number Plate Recognition Unit** checkbox.

Note: Up to two cameras can be added as ANPR unit for viewing the license plate and vehicle information recognized by the camera via Control Client (for details, refer to *User Manual of Blazer Express Control Client*).

6. Set the **Export to Area** switch as ON to export the camera to an area. You can create a new area by the device name or select an existing area.

Note: If you do not export cameras to area, you cannot perform the live view, playback, event settings, etc.

7. Click **Add** to add the device and back to the device list page. You can also click **Add and Continue** to save the settings and continue to add other devices.

Adding the Camera via PoE Interface

For Blazer Express/16/8P, eight PoE interfaces are available for enabling the Blazer Express to pass electrical power safely, along with data, on Ethernet cabling to the connected network cameras.

Note: The camera to be connected via PoE interface should support PoE function.

Before you start:

You must change the password of the camera's admin user to that of Blazer Express's admin user before connecting the camera to the Blazer Express.

Steps:

1. Use the PoE interface on the rear panel and a network cable with RJ-45 connectors to connect the network camera to Blazer Express.
2. On the device list, the cameras are added automatically.

Note: If it is not added or you delete the camera from the device list manually, unplug the camera and reconnect the camera to the Blazer Express via PoE interface after two minutes to add the camera.

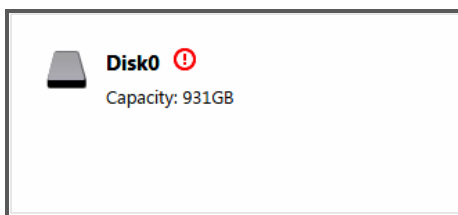
Local Storage

You can manage the connected HDDs of Blazer Express and allocate the storage space to the added cameras for video and picture storage.

Steps:

1. Click **Physical View** and select **Local Storage** to enter the Local Storage page. In the Quota Information area, each color clip corresponds to the storage space allocated to a camera.

Note: If an exclamation mark appears near the disk, you need to access the Blazer Express locally and perform the disk management before it can work properly. For details, refer to *Managing Installed Hard Disks*.



2. Click **Initialize** to initialize the HDDs so that you can store the videos and pictures on the HDDs.
Note: Initializing the HDD will erase all data on it.
3. Click **Edit** to list all the added cameras.
4. In the Used Space column, set the storage space allocated to the camera, and by default, the video and picture quota will be set automatically and the proportion of video quota to picture quota is four to one. You can edit the video quota and picture quota as desired. After setting the video quota, the estimated recording time shows which is calculated based on all-day recording.
5. Click **Save** to confirm the settings.


Live View

After adding the cameras and managing the area, you can live view the camera via Control Client which is a C/S software providing multiple operating functionalities.

Note: Here we only introduce the access to the station via the Control Client installed on the Blazer Express. You can also install the Control Client on your PC for accessing the Blazer Express via network. For more details, refer to the *User Manual of Blazer Express Control Client*.

Login via Control Client

Steps:




1. Double-click  on the desktop to run the Control Client.
2. Click **Show Server Address** and input the parameters.
3. You can select to log in to the Blazer Express via IP address or HiDDNS domain name.
 - **IP Address:** Input the IP address and port No. of Blazer Express. By default, the port No. is 80.
 - **HiDDNS:** Input the HiDDNS server address and the domain name registered on HiDDNS server.
4. Input the user name and password of the Blazer Express.
5. (Optional) Check the checkbox **Remember Password** to keep the password.
6. (Optional) Check the checkbox **Enable Auto-login** to log into the software automatically.
7. Click **Login** to enter the Control Client.

Notes:

- If failed login attempt is detected, you are required to input the verification code before you can login successfully.
- The account will be frozen for 10 minutes after 5 failed password attempts.

Live View

Steps:

1. Open the Live View page and click  to enter the view mode.
2. (Optional) Click the  and select the window division mode.
3. Click  to list the cameras of the area.
4. Click-and-drag the camera to the display window, or double-click the camera name after selecting the display window to start the live view.

Note: For detailed operations about live view, please refer to the *User Manual of Blazer Express Control Client*.

Recording Schedule Settings and Playback

Before you can view the video files of the camera via the Control Client, you need to set the recording schedule via Web Client.

Recording Settings

Purpose:

When there are HDDs installed on the Blazer Express, you can set the recording schedule of the cameras for the continuous, or event triggered recording.

Click the **Recording & Event** to open the Recording and Event page.

Steps:

1. Click **Recording** to enter the recording settings page. Click **Add** to enter the recording settings page.
2. Input the required information.
 - Click to select a camera to configure the recording settings for.
 - **Recording Rule:** Optionally, you can select the defined recording rule for the camera. Or input the following parameters to customize the recording settings. For setting the recording rule, refer to *User Manual of Blazer Express Web Client*.
 - **Recording Schedule:** Select the recording type as all-day continuous recording, event triggered recording or custom recording schedule. For setting the custom recording, refer to *User Manual of Blazer Express Web Client*.
 - **Stream Type:** Select stream for recording.
 - **Pre-Record:** Record video from periods preceding detected events.
 - **Post-Record:** Record video from periods following detected events.
 - **Enable ANR:** Turn the automatic network replenishment on to temporarily store the video in the camera when network fails and transport the video to Blazer Express when network recovers.
3. Click **Add** to add the rule and back to the recording list page. You can also click **Add and Continue** to save the settings and continue to add other recording settings.

Remote Playback

Purpose:

After configuring the recording settings for the camera via the Web Client, the video files can be searched and played back remotely via Control Client.

Note: Here we only introduce the playback of continuous video files. For other operations about playback, please refer to the *User Manual of Blazer Express Control Client*.

Click **Remote Playback** on the control panel to enter the Remote Playback page.



Searching Video Files for Playback

Steps:


1. Enter the Remote Playback page.
2. Click-and-drag the camera, or area to the display window, or double-click the camera, or area to start the playback.

Playing Video Files

The timeline indicates the time duration for the video files, and the video files of different types are color coded. You can hover cursor over the timeline to take a quick view of the video thumbnail of that time. Click on the timeline to play back the video of the specific time.

You can click  or  to zoom in or zoom out the timeline bar. You can also use the mouse wheel to zoom in or zoom out on the timeline.

You can drag the timeline bar to go to the previous or the next time period.

Move the mouse to the playback window and click  and set the locking duration to protect the video file from being overwritten when the HDD is full and it cannot be deleted as well.

Event Configuration

Purpose:

In Blazer Express Web Client, you can assign linkage actions to the event by setting up a rule.

For example, Blazer Express will automatically send email to the designated receiver when motion is detected.

Click the **Recording and Event** to enter the Event Configuration page.

Configuring Motion Detection Event

Note: The camera exception types vary according to the connected device. Here we take the introduction of motion detection settings as an example. For the settings of other camera exception types (e.g., video loss, video tampering), please refer to the *User Manual* of the connected devices. For the settings of other event types (e.g., alarm input, device exception), please refer to the *User Manual of Blazer Express Web Client*.

Purpose:

A motion detection alarm is triggered when the camera detects motion within its defined area. The linkage actions, such as email linkage and recording linkage, can be set.



Steps:

1. Click **Event** to enter the event settings page. Click **Add** to enter the event settings page.
2. Input the required information.
 - **Triggered by:** Select the event source type, specific event source, and the specific event type.
 - **Event Name:** Input a name for the event as needed.
 - **Event Rule:** Optionally, you can select the defined event rule for the camera. For setting the event rule, refer to *User Manual of Blazer Express Web Client*.
 - Select the linkage actions to handle the event if you do not select the defined event rule.
3. Click **Add** to add the rule and back to the event list page. You can also click **Add and Continue** to save the settings and continue to add other event settings.

Checking Event Logs

If the camera detects motion, then the configured linkage actions will be activated. For the alarm information and the linkage actions of Control Client, you can check them via Control Client.

Steps:


1. Click **Alarm Center** on the control panel to enter the Alarm Center page, and click the **Search** tab.
2. Select the event source, event type, and time range.
3. Select the Event radio button to select the log type.
4. Click **Search**. The matched log files will display on the list. You can check the detailed event information.
5. Click  to view the detailed information and the linked video. Click  to save the information to your PC.

Shutting Down the Blazer Express

Press the power switch on the front panel and the server will shut down properly.

Or you can perform the following steps to shut down the Blazer Express.

Steps:

1. Move your mouse to the lower left-hand corner of the screen and click .
2. Click **Shut down** to close the Blazer Express.

0100001060422



First Choice for Security Professionals